

## Accommodation

As well as the campground at Koreelah National Park and Tooloom Falls, there are plenty of accommodation options near Tooloom and Koreelah National Parks. For more information, contact the surrounding Visitor Information Centres.

### Urbenville

- Brooklyn Camping Grounds 02 6634 6176
- Crown Hotel 02 6634 1213
- Levuka Rainforest Recreation Park 02 6634 1338
- Wallaby Creek Retreat 02 6634 6166

### Upper Tooloom

- Tooloom Homestead 0476 136 946

### Cullendore

- Cullendore High Country Campground 0459 901 538
- Guestwick Eco Resort 07 4667 9145
- Terab Park Farm 0447 950 056

### Liston

- Aloomba Lavender 07 4686 1191
- Acacia Cottages 0409 153 939

### Paddys Flat

- Clarence River Wilderness Lodge 02 6665 1337
- Lanikai Campgrounds 02 6666 1272

## Local Attractions



*WWII Tank Traps at Paddy's Flat*

- Tooloom Falls
- Lanikai Garden Walk (bookings required)..... 02 6666 1272
- Urbenville Pioneer Cottage..... 02 6634 1352
- Paddy's Flat Tank Traps
- Aloomba Lavender ..... 07 4686 1191
- Undercliffe Falls
- Bean Creek Falls
- Queen Mary Falls & Falls Circuit

## Contact Information

### Kyogle National Parks Office

02 6632 0000

[www.nationalparks.nsw.gov.au](http://www.nationalparks.nsw.gov.au)

136 Summerland Way, Kyogle NSW

Open Monday to Friday 8.30am to 4.30pm



### Kyogle Visitor Information Centre

02 6632 2700

[www.visitkyogle.com.au](http://www.visitkyogle.com.au)

9-13 Summerland Way, Kyogle NSW

Open Daily 9.00am to 4.00pm



### Tenterfield Visitor Information Centre

02 6736 1082

[www.visittenterfield.com.au](http://www.visittenterfield.com.au)

157 Rouse Street, Tenterfield NSW

Open Monday to Friday 9.00am to 4.30pm

Saturday 9.00am to 4.00pm

Sunday 10.00am to 2.00pm



### Urbenville Visitor Information Centre

02 6634 1254

[urbenville.news.visitor.center@gmail.com](mailto:urbenville.news.visitor.center@gmail.com)

50 Urben Street, Urbenville NSW

Open Monday to Friday 7.00am to 5.00pm

Saturday 7.00am to 2.00pm

Sunday 8.00am to 4.00pm



#tenterfieldtrue

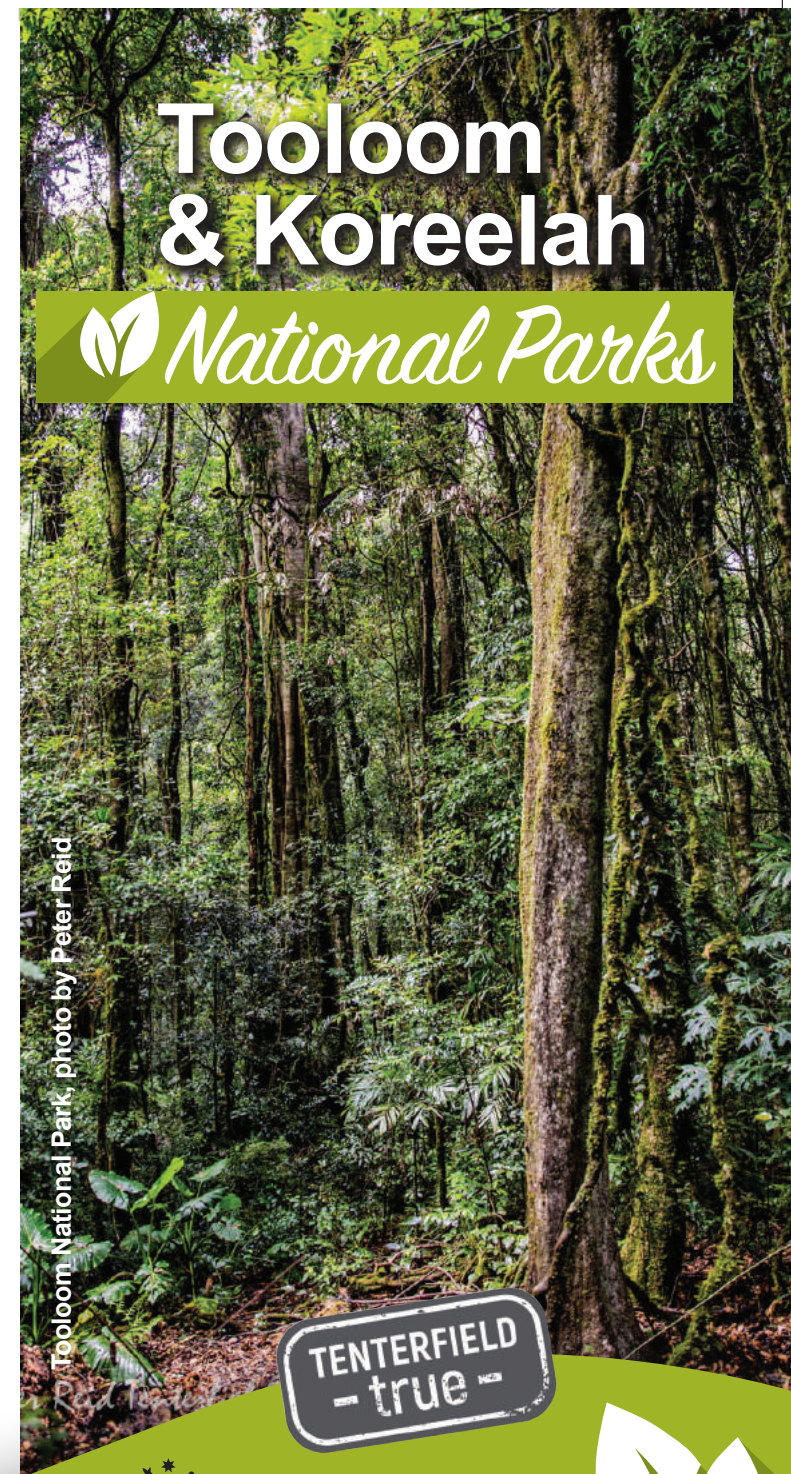
#nswparks

#discovergondwana



Australian Government

This project received grant funding from the Australian Government



Australian Government





# Tooloom

## National Park



*Tooloom Walking Track, photo by John Spencer & Office of Environment & Heritage*

Tooloom National Park is a great place for picnics, walking and birdwatching and offers scenic views across the Great Dividing Range.

Bordered by dry forest and farmland, Tooloom National Park protects a lush, cool landscape of subtropical rainforest known as Tooloom Scrub, which is part of Gondwana Rainforests of Australia World Heritage Area. The park also includes important sections of red and flooded gum.

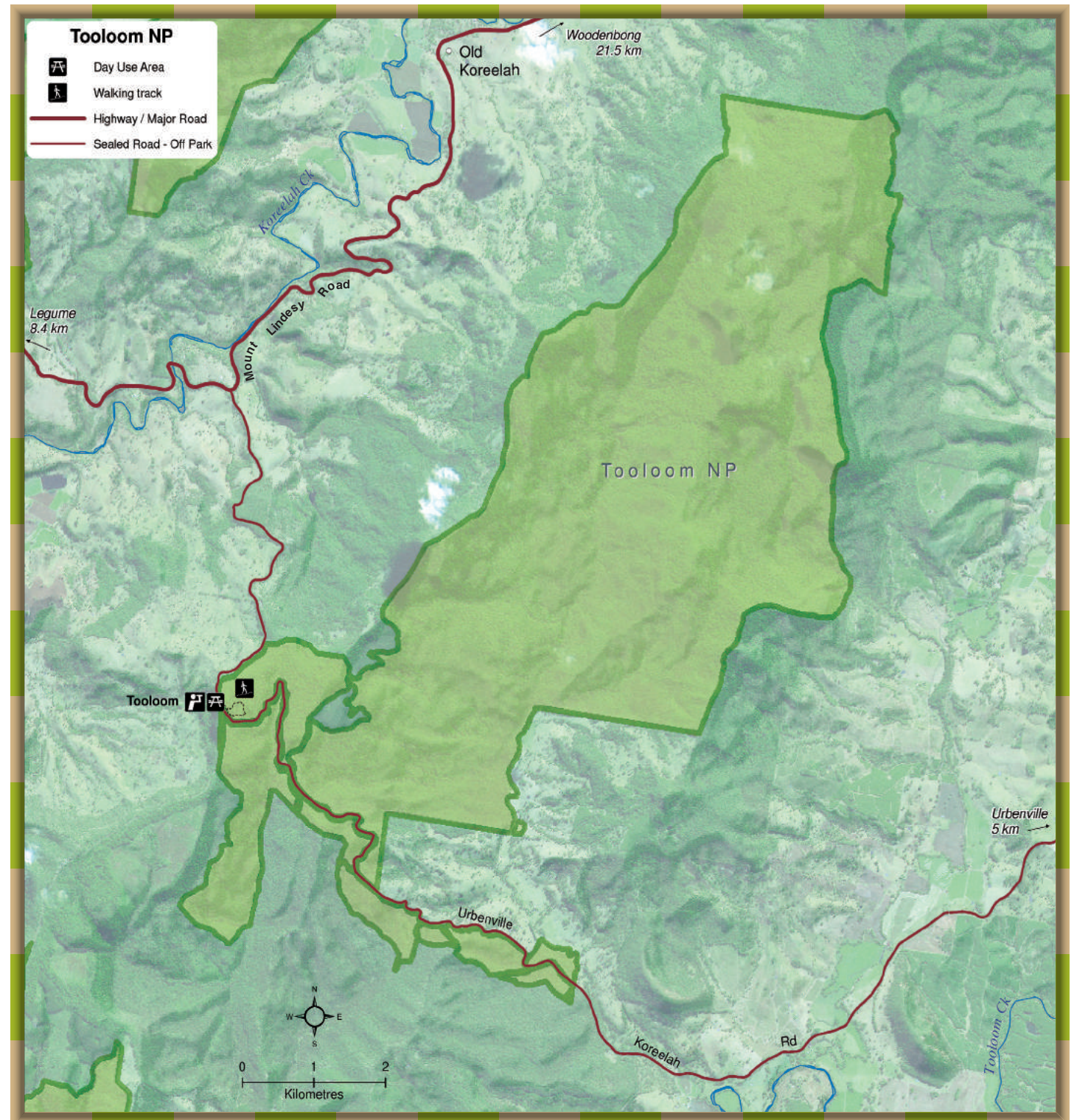
Tooloom lies within the traditional land of the Githabul Aboriginal people. Enjoy a walk in this gorgeous natural environment of strangler figs, glossy green rainforest foliage and superb scenic views.

Ten species of kangaroos and wallabies inhabit the park, including the threatened long-nosed potoroo. Take an easy hike along Tooloom walking track and you'll probably see a red-necked pademelon dart across the trail.



Road Access: 2WD access on sealed roads.

Disability Access: Medium level of wheelchair access. Some assistance required.





## Tooloom Picnic Area



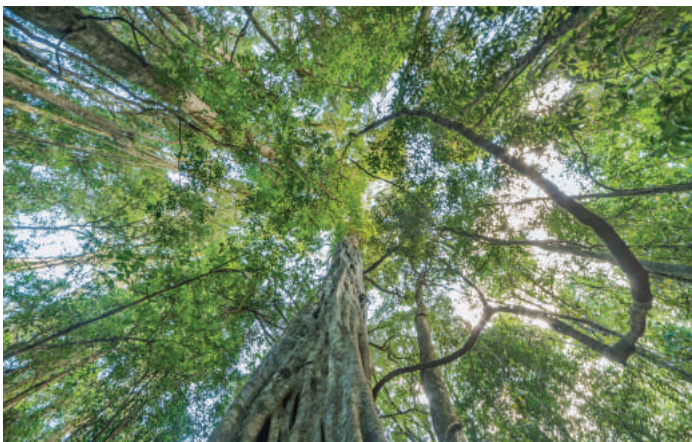
*Tooloom Picnic Area, photo by John Spencer & Office of Environment & Heritage*

Set in a small clearing within the lush subtropical rainforest of Tooloom Scrub, the picnic area gives you a taste of what's to come if you decide to explore further on the Tooloom walking track. Tooloom lookout, set in a eucalypt forest with sweeping scenic views, is also accessible from the picnic area.

As you enjoy a wood fire barbecue lunch with friends, family, or by yourself, listen out for the call of wompoo fruit-doves—strikingly beautiful doves which are predominantly purple, yellow, and green.

In summer, look out for the bright red fruit of walking stick palms in the rainforest surrounding the picnic area.

## Tooloom Walking Track

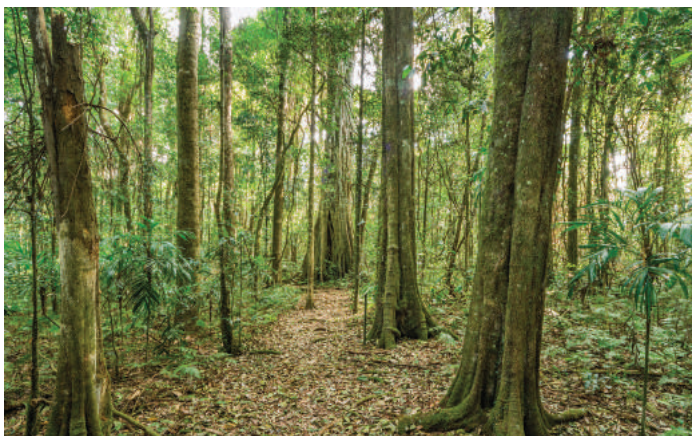


*Tooloom Scrub and Rainforest, photo by John Spencer & Office of Environment & Heritage*

*1km loop, 15-45 minutes, Grade 2 walk*

Tooloom walking track takes you on a short, easy walk a little deeper into the lush rainforest of Tooloom Scrub. Bring along your binoculars and take your time birdwatching, as over 200 species of birds have been recorded in the park and many of these inhabit the rainforest.

On either side of this trail are large rainforest trees and vines stretching from the leaf-littered forest floor to the high canopy above. Twisted roots of strangler figs can be seen among walking stick palms, which fruit bright red in summer.



*Tooloom Walking Track, John Spencer & Office of Environment & Heritage*

## Tooloom Lookout



*View over farmland and Tooloom Scrub, photo by John Spencer & Office of Environment & Heritage*

It's a short, easy walk to magnificent scenic views across World Heritage Tooloom Scrub and out to the Great Dividing Range from Tooloom lookout.

Tooloom lookout offers extensive scenic views to the deep green canopy of World Heritage Tooloom Scrub and across farmland and forested hills out to the Great Dividing Range. It's only a short stroll from Tooloom Picnic Area to the lookout, through tall eucalypt forest with a yellow understorey of blady and kangaroo grasses and acacia scrub.



*View from Tooloom Lookout*



# Koreelah

## National Park



*Koreelah Creek*

Perfect for a weekend escape, Koreelah National Park offers World Heritage rainforest, camping, swimming, walking and great birdwatching.

Escape the city lights and step into a world teeming with wildlife, hidden away in the remote corners of the Northern New England region. Koreelah National Park provides a perfect weekend getaway and a beautiful touring route.

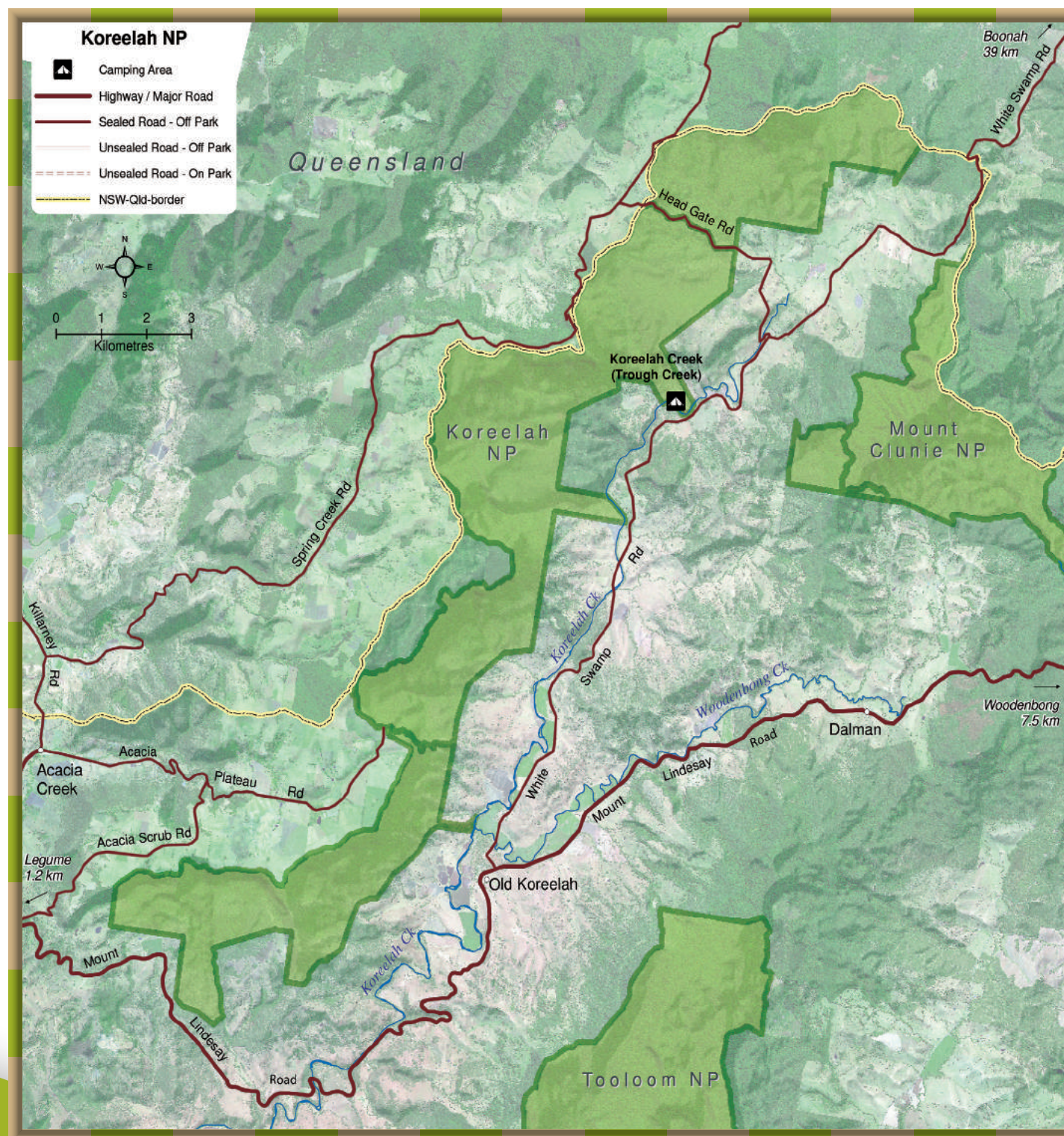
Connect with nature and see magnificent World Heritage rainforest that hugs steep slopes and overlooks eucalypt forests and peaceful valleys. Enjoy easy walking, remote camping and fantastic birdwatching.

Take an easy stroll along the Gorge walking track and spend the afternoon swimming in natural pools and spotting wildlife in the rocky gorge. Keep an eye out for platypus, koalas, sugar gliders, brush-tailed rock wallabies and glossy black cockatoos.



*Access: This area has a medium level of wheelchair access, some assistance may be required.*

*Road Access: 2WD access via some unsealed roads.*





## Koreelah Creek Campground



*Koreelah Creek Campground, photo by National Park Odyssey*

*Fees apply. Sites suitable for tents, camper trailers and caravans.*

This delightful camping spot is set among tall eucalypt trees next to the beautiful Koreelah Creek. Find a grassy patch to pitch a tent or pull up your caravan for a relaxing experience in the bush.

Visit the creek for a picnic, stay for a night, or spend a few days and unwind to the sounds of the gently flowing waters and wind rustling in the trees above.

Enjoy swimming below the falls or wander along the nearby gorge walking track. Look out for platypus enjoying an early morning swim and watch for lace monitors around the campsites.

## Koreelah Gorge Walking Track



*Koreelah Creek Gorge*

*800m return, 20-30 minutes, Grade 2 walk*

Take a relaxed stroll through the forest and explore Koreelah Creek Gorge on this short walking track. It's only 10 minutes from the campground, and there's so much to see along the way. Rugged peaks rise to the west and the steep cliffs are clad with the dark green foliage of hoop pines. Keep a lookout as you wander along the creek for platypus swimming in the large pools of water.

Once you arrive at the gorge, stop for a while, take a refreshing swim in the cool waters or find a spot on the rocks to sit and admire the local wildlife.

You can also park your car just past the campground and it's only a 200 metre walk to the gorge.

## Gondwana Rainforests of Australia



*Rainforest in Tooloom National Park, photo by Peter Reid*

Gondwana Rainforests of Australia include the most extensive areas of subtropical rainforest in the world, stretching to over fifty remnant rainforests in New South Wales and South East Queensland, protected and recognised with World Heritage status.

These Gondwana Rainforests of Australia form the most extensive areas of diverse types of rainforest to be found anywhere on the globe. **These extraordinary areas still contain ancient and primitive plants and animals from which life on Earth evolved.**

Tooloom National Park protects a lush, cool landscape of subtropical rainforest known as Tooloom Scrub, and Koreelah National Park ranges from dry sclerophyll forests to the cool subtropical rainforests, which are all part of the Gondwana Rainforests of Australia World Heritage Areas.

Tooloom and Koreelah are two of the few areas on Earth in which plants and animals have remained relatively unchanged from their ancestors.

*“Koreelah Creek campground is a delightful camping area and an ideal place to relax.”*





## Flora

Tooloom National Park features Tooloom Scrub, red and flooded gum, twisted roots of strangler figs and in summer, the bright red fruit of walking stick palms.

The ancient world of Koreelah National Park features dry sclerophyll forests, cool subtropical rainforests, black booyong, yellow carribean, rosewood and emergent hoop pines.

## Fauna

Ten species of kangaroos and wallabies inhabit Tooloom National Park, including the threatened long-nosed potoroo and black-striped wallabies, which have a distinct dark stripe running from their neck to their rump.

You may also come across a southern angle-headed dragon, or a Stephens Banded Snake or carpet python (some of 13 snake species found in the area). Other endangered animals include the Fleay's barred frog.

The diverse natural habitats of Koreelah make it a haven for wildlife. You'll see red-necked wallabies and lace monitors. You may even spot red-bellied black snakes. And carpet pythons sunning themselves on the creek banks. Keep an eye out for platypus, koalas, sugar gliders and brush-tailed rock wallabies.



*Tooloom Scrub, photo by John Spencer & Office of Environment & Heritage*



*Brushtailed Rock Wallaby, photo by Peter Harris*



*Red Necked Wallaby, photo by Simone Cottrell & Office of Environment & Heritage*

## Birdwatching

Over 200 species of birds have been recorded in Tooloom National Park and over 110 species can be found in Koreelah National Park.

\* **Vulnerable Species**  
# **Critically Endangered**

**Some of the bird species found in both of the parks include:**

- Australian Brush-turkey
- Brown Quail
- Emerald Dove
- White-headed Pigeon
- Wonga Pigeon
- Topknot Pigeon
- Brown Cuckoo-Dove
- **Wompoo Fruit-Dove\***
- Australian Owlet-nightjar
- Grey Goshawk
- Wedge-tailed Eagle
- Australian King-Parrot
- **Little Lorikeet\***
- Crimson Rosella
- Fan-tailed Cuckoo
- Shining Bronze-Cuckoo
- Eastern Koel
- Channel-billed Cuckoo
- Southern Boobook
- **Masked Owl\***
- **Sooty Owl\***
- Laughing Kookaburra
- Sacred Kingfisher
- Rainbow Bee-eater
- Noisy Pitta
- Red-browed Treecreeper
- **Brown Treecreeper\***
- White-throated Treecreeper
- Green Catbird
- Satin Bowerbird
- Regent Bowerbird
- Striated Thornbill
- Brown Thornbill
- Brown Gerygone



*Brown Tree Creeper*

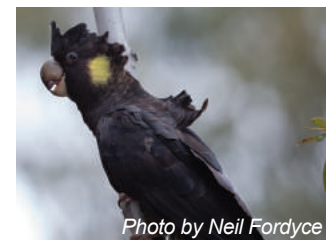


*Mistletoe Bird*

- Yellow-throated Scrubwren
- White-browed Scrubwren
- Large-billed Scrubwren
- Spotted Pardalote
- Eastern Spinebill
- Yellow-faced Honeyeater
- Lewin's Honeyeater
- White-naped Honeyeater
- Logrunner
- Eastern Whipbird
- Cicadabird
- Grey Shrike-thrush
- Eastern Shrike-tit
- Golden Whistler
- Olive-backed Oriole
- Pied Currawong
- Spangled Drongo
- Grey Fantail
- Rufous Fantail
- Black-faced Monarch
- Leaden Flycatcher
- Paradise Riflebird
- Eastern Yellow Robin
- Silvereye
- unidentified ground thrush
- Mistletoebird
- Red-browed Finch

**Some of the species found only in Tooloom National Park include:**

- **Rose-crowned Fruit-Dove\***
- **Superb Fruit-Dove\***
- Tawny Frogmouth
- Fork-tailed Swift
- White-throated Needle-tail
- Straw-necked Ibis
- Brown Goshawk
- Pacific Baza
- **Black-breasted Button-quail#**
- Sulphur-crested Cockatoo
- Yellow-tailed Black-Cockatoo
- **Coxen's Fig-Parrot#**
- Scaly-breasted Lorikeet
- **Powerful Owl\***
- Forest Kingfisher
- **Rufous Scrub-bird\***
- Red Wattlebird
- Bell Miner
- **Grey-crowned Babbler\***
- Spotted Quail-thrush
- Little Shrike-thrush
- Rose Robin
- Pale-yellow Robin



*Yellow Tailed Black Cookatoo*



*Blue Faced Honeyeater*

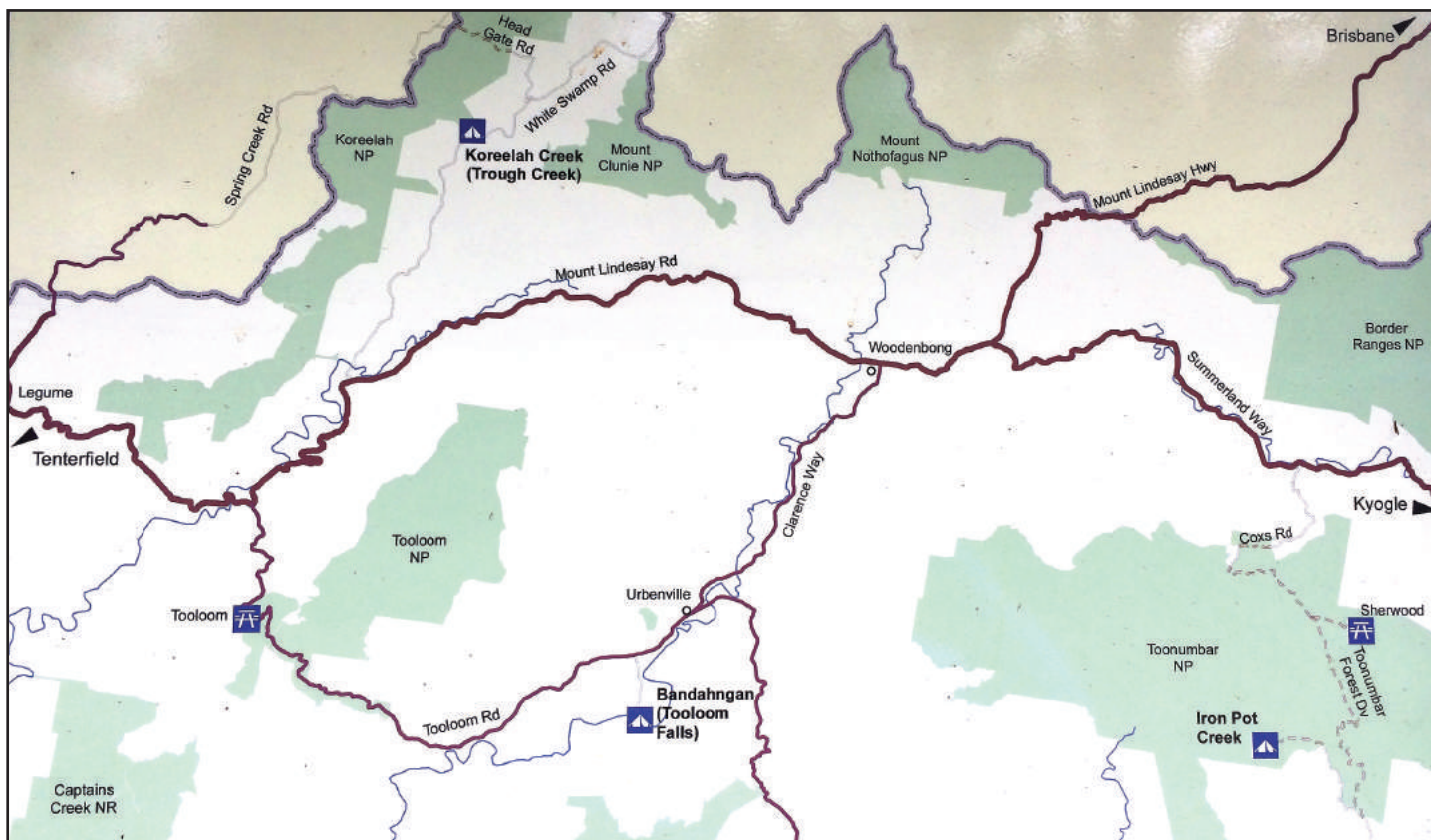
**Some of the species found only in Koreelah National Park include:**

- Pacific Black Duck
- White-throated Nightjar
- Little Pied Cormorant
- White-faced Heron
- Dusky Moorhen
- **Glossy Black-Cockatoo\***
- Musk Lorikeet
- Pale-headed Rosella
- Eastern Rosella
- Rainbow Lorikeet
- Pheasant Coucal
- Brush Cuckoo
- Dollarbird
- **Albert's Lyrebird\***
- Superb Lyrebird
- Superb Fairy-wren
- Variegated Fairy-wren
- Red-backed Fairy-wren
- Yellow Thornbill
- White-throated Gerygone
- Striated Pardalote
- **Regent Honeyeater#**
- Blue-faced Honeyeater
- Yellow-tufted Honeyeater
- Noisy Miner
- Scarlet Honeyeater
- Little Friarbird
- **Varied Sittella\***
- Black-faced Cuckoo-shrike
- Rufous Whistler
- Pied Butcherbird
- Australian Magpie
- Grey Butcherbird
- Willie Wagtail
- Australian Raven
- Torresian Crow
- Magpie-lark
- Restless Flycatcher
- Spectacled Monarch
- Jacky Winter
- Welcome Swallow

**Species Information**  
sourced from BioNet.nsw.gov.au



## Getting Here



Tooloom & Koreelah National Parks are located in the north eastern corner of the Tenterfield Shire.

**To access Tooloom National Park** from the Mount Lindsay Highway, turn towards Urbenville on the Tooloom Road and continue for approximately 20km to the Tooloom Picnic Area. To access the park from Urbenville, head towards Legume on the Tooloom Road and continue for approximately 17km to the Tooloom Picnic Area.

**To access Koreelah National Park** from the Mount Lindsay Highway, continue towards Woodenbong, past Tooloom Road, and turn left at Old Koreelah onto White Swamp Road. Travel north for 12km and the campground will be on the left. From Woodenbong, travel west along the Mount Lindsay Highway for approximately 22km. Turn right at Old Koreelah onto White Swamp Road and travel north for 12km, the campground will be on the left.

## Caring for the Park

- Firewood is not supplied and may not be gathered within the National Parks.
- No pets or domestic animals are allowed in the National Parks (other than assistance animals).
- NSW National Parks are no smoking areas.
- There is limited to no mobile reception in these parks.
- Water is not available, so you'll need to bring your own supply for drinking and cooking.
- Rubbish bins are not provided, please take your rubbish with you when leaving.
- Do not feed wild animals, as it can make an animal sick or aggressive.
- Take only photos and leave only footprints. All plants, animals and rock formations are protected in national parks.

## Nearby Towns



Crown Mountain near Urbenville, photo by @kenwarephotos

### Urbenville

17km to Tooloom

44km to Koreelah



### Woodenbong

27km to Tooloom

36km to Koreelah



### Legume

28km to Tooloom

34km to Koreelah



### Killarney

38km to Tooloom

44km to Koreelah



### Bonalbo

50km to Tooloom

82km to Koreelah



### Warwick

71km to Tooloom

77km to Koreelah



### Kyogle

86km to Tooloom

95km to Koreelah



### Tenterfield

122km to Tooloom

127km to Koreelah





# Cultural Heritage

## Traditional land of the Githabul people

Tooloom and Koreelah National Parks are part of the traditional land of the Githabul people.

For thousands of years, these forests provided shelter, food, medicine and materials for tools.

In recognition of their ongoing connection to the land, the Federal Court of Australia recognised the Githabul People's Native Title rights and today, Koreelah National Park is proudly co-managed with the local Githabul People.

Certain features in and around Tooloom remain spiritually significant, such as Bandahngan Aboriginal Area (Tooloom Falls), which is 13km east of Tooloom National Park. The Aboriginal word for 'Tooloom' is 'Dooloomi', which means 'head lice' and relates to the story of these falls.

Butheram (stories) and Yaribirri (songs) connect Githabul People to their country and define their relationships with their land and water.



Tooloom Falls, photo by Peter Reid



Tooloom Falls, photo by @kenwarephotos

Bandahngan Aboriginal Area (Tooloom Falls) is associated with a story of a clever woman, known as Dirrangun, and the creation of the Clarence River:

*"Old and cranky Dirrangun quarrelled with her two daughters and their husband, the handsome Balugan, so they tried to starve her. In retaliation she stole the only fresh water and hid it in her coolamon (bark dish). For three thirsty days Balugan and his wives searched for the water which was eventually found by Dillillay, one of the dogs.*

*Balugan was so angry with the old woman that he split the coolamon with a magic spiny anteaters quill, causing the water to gush out.*

*This is turn made a terrible storm which uprooted the fig tree in which Dirrangun was sheltering, blowing the old woman off towards Baryulgil.*

*This created the large hollow below Tooloom Falls and the waterfalls along the river formed when Dirrangun sat down, trying to stop the current.*

*This was how the Clarence River was made and how Dirrangun, clinging to her fig tree, ended up somewhere below Grafton. Aboriginal people believe she became a rock at the mouth of the Clarence River at Yamba"*

~ Story by Auntie Millie Boyd

# Bandahngan Tooloom Falls



Tooloom Falls, photo by @kenwarephotos

**Tooloom Falls is a site of special cultural significance to local Githabul People who know this place as Dooloomi.**

Dooloomi is derived from the Githabul word for head lice, which were believed to infest the pool below the falls. But don't let that put you off - these warnings were intended to keep children away from the deep part of the river.

Tooloom Falls are 10 metres high and 60 metres wide, and have water flowing over them during most of the year. The area is a great place for swimming (at the top and bottom of the falls) and kayaking (top of the falls).

There is also a camp at the top of the falls with toilet and basic BBQ facilities available. You must bring your own drinking water. The closest facilities are at Urbenville, only 15 minutes away.

Today the Githabul Aboriginal people co-manage the park with the NSW National Parks and Wildlife Service.



Road Access: 2WD access via some unsealed roads.